

This is a report on selected aspects of activity in your High Dependency Unit. Data is collated and analysed on:

1. Patients admitted during the reported month: Admissions, readmissions, admitting specialty.
2. Patients discharged during the reported month: Length of stay, delayed discharges, night time discharges, early discharges.
3. Patients treated during reported month: occupancy, vasoactive drugs, NIV/CPAP, level of care, epidurals.

Detailed methodology can be found in Appendix 1.
 For further information on this report, please contact:

Paul Smith
 Clinical Co-ordinator
psmith44@nhs.net
 0141 282 2146

Clare McGeoch
 Quality Assurance Manager
clare.mcgeoch@nhs.net
 0131 275 7605

Lorraine Smyth
 Senior Information Analyst
lorraine.smyth@nhs.net
 0131 275 6529

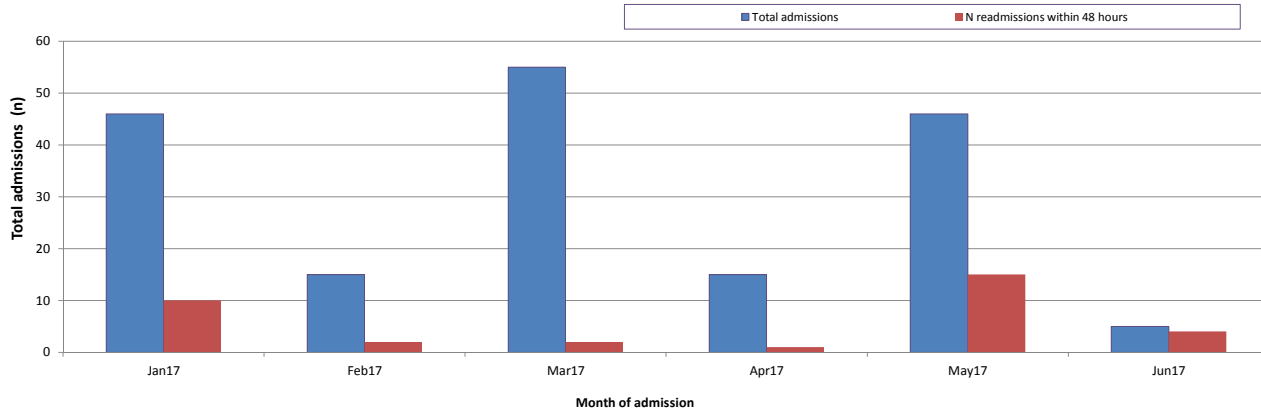
Please note: This information has been released for management information purposes only. The data have not been adjusted to protect against potential disclosure risks and may contain information which enables (perhaps with the aid of further knowledge of the topic) an individual patient to be identified. Please ensure circulation is restricted and that patient confidentiality is not compromised.
 For further guidance see ISD's Statistical Disclosure Control Protocol <http://www.isdscotland.org/isd/4489.html>. Please contact psmith44@nhs.net if you have any queries regarding this.

SICSAG data is subject to ongoing validation and must be regarded as dynamic. Therefore if this analysis was to be re-run at a later stage it may be subject to change.

Unit Code **Hospital Name** **January 2017**

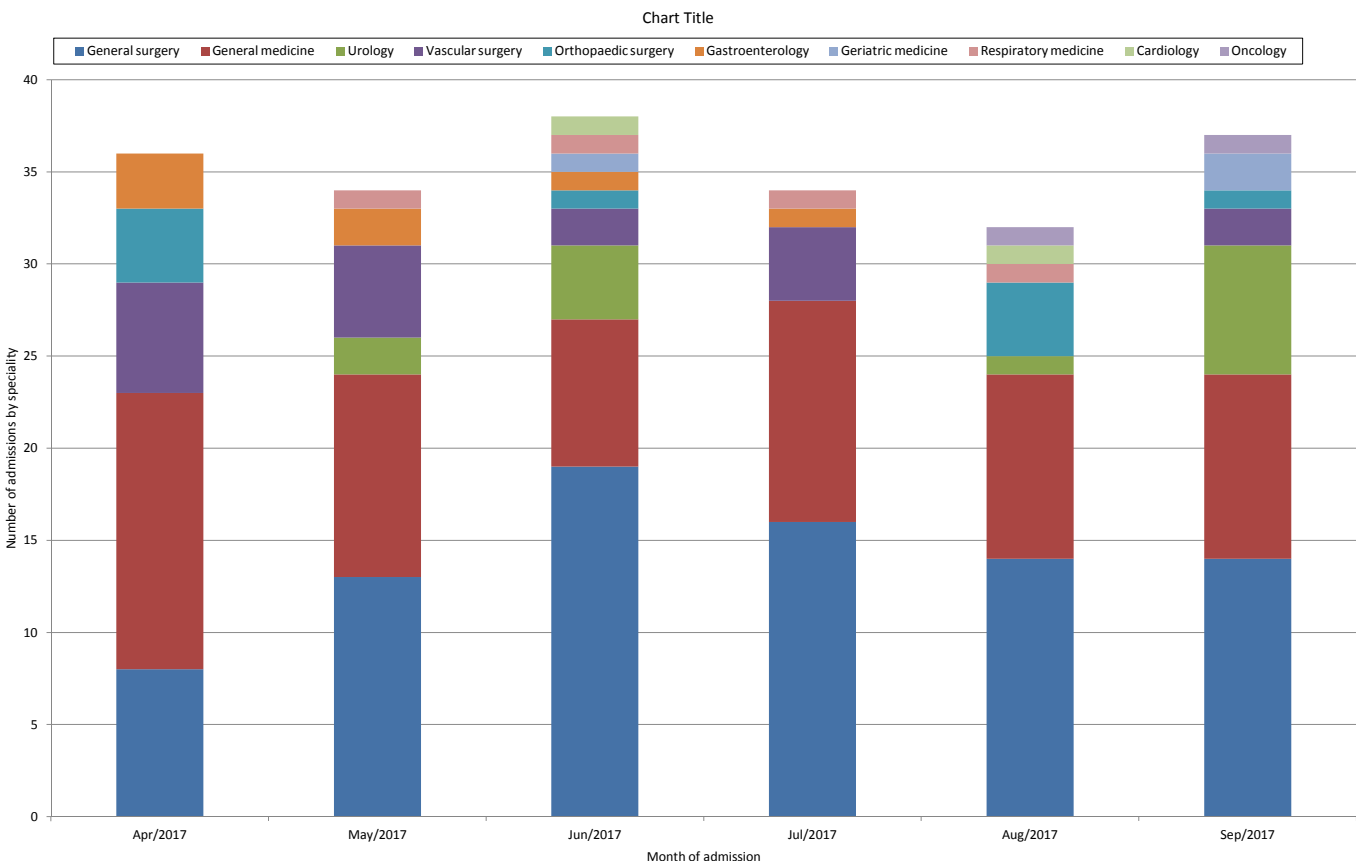
Section 1: Admitted Patients

1.1 Table and graph of admissions and readmissions during the last six months



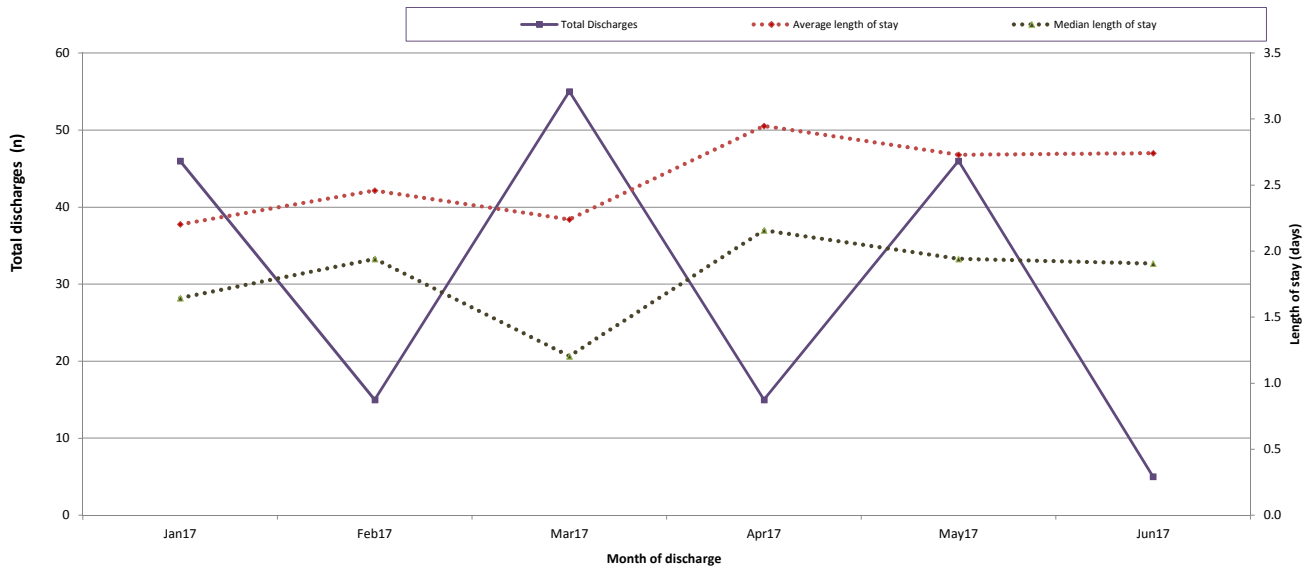
Month	Total admissions	Readmissions within 48 hrs	
		Number	%
Jan17	46	10	22%
Feb17	15	2	13%
Mar17	55	2	4%
Apr17	15	1	7%
May17	46	15	33%
Jun17	5	4	80%
Total	182	34	19%

1.2 Admissions by specialty over the past year



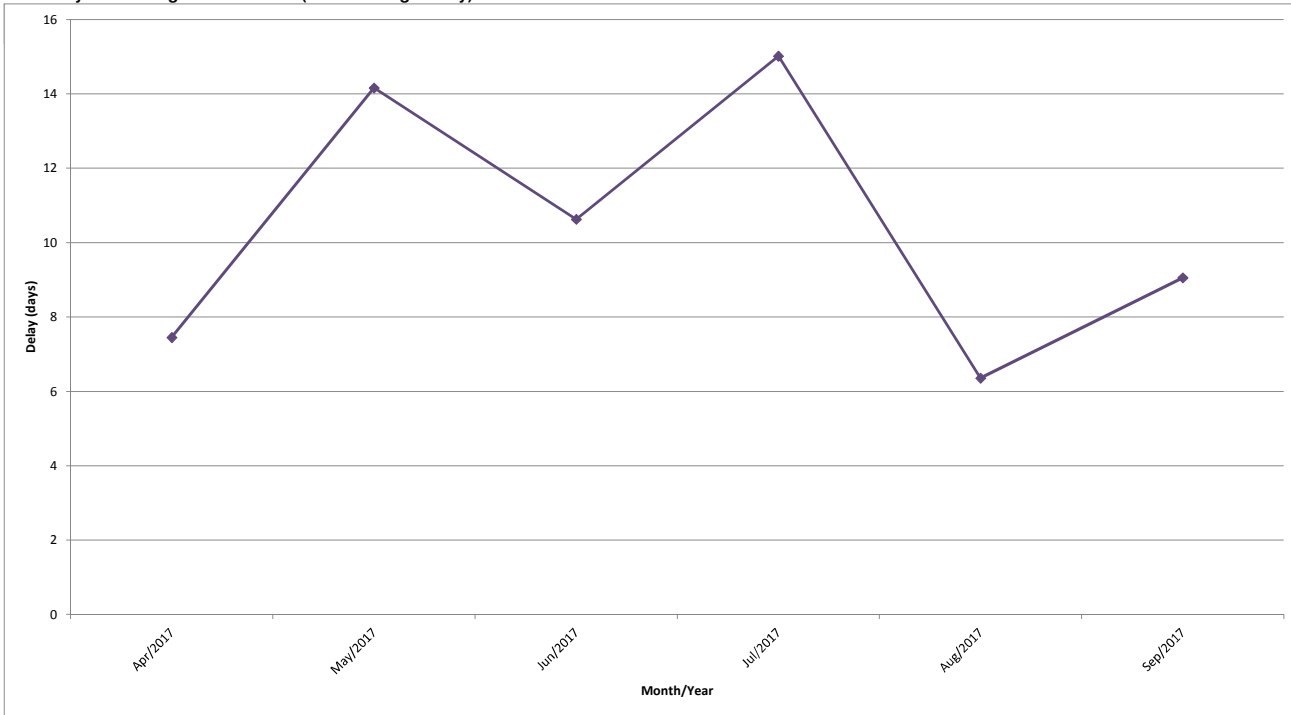
Section 2: Discharged Patients

2.1 Table and chart of the number of discharges and length of stay in days during the last six months



Month	Number of discharges	Length of Stay	
		Mean	Median
Jan17	46	2.2	1.6
Feb17	15	2.5	1.9
Mar17	55	2.2	1.2
Apr17	15	2.9	2.2
May17	46	2.7	1.9
Jun17	5	2.7	1.9
Total	182	2.6	1.9

2.2.1 Delayed discharges each month (live discharges only)

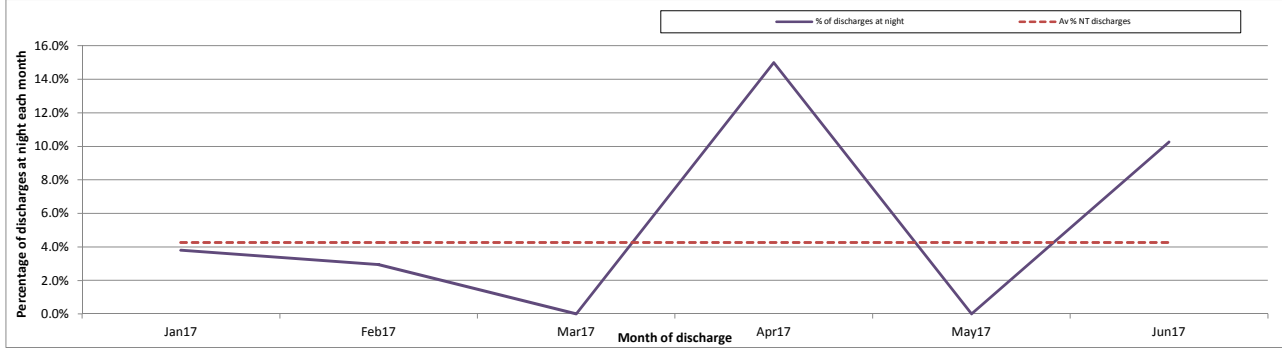


2.2.2 Delayed discharges within the reported month (live discharges only)

Reasons	Number of delayed discharges	Occupied time due to delay		
		Days	Hours	Minutes
ICU bed shortage	0	0	0	0
HDU bed shortage	0	0	0	0
Ward bed shortage	15	10	14	20
Nursing staff shortage	0	0	0	0
Other staff shortage	0	0	0	0
Transport shortage	1	0	11	0
Other	1	0	0	0
Unknown	0	0	0	0
Total	17	8	25	20

(Quality Indicator 2.1)

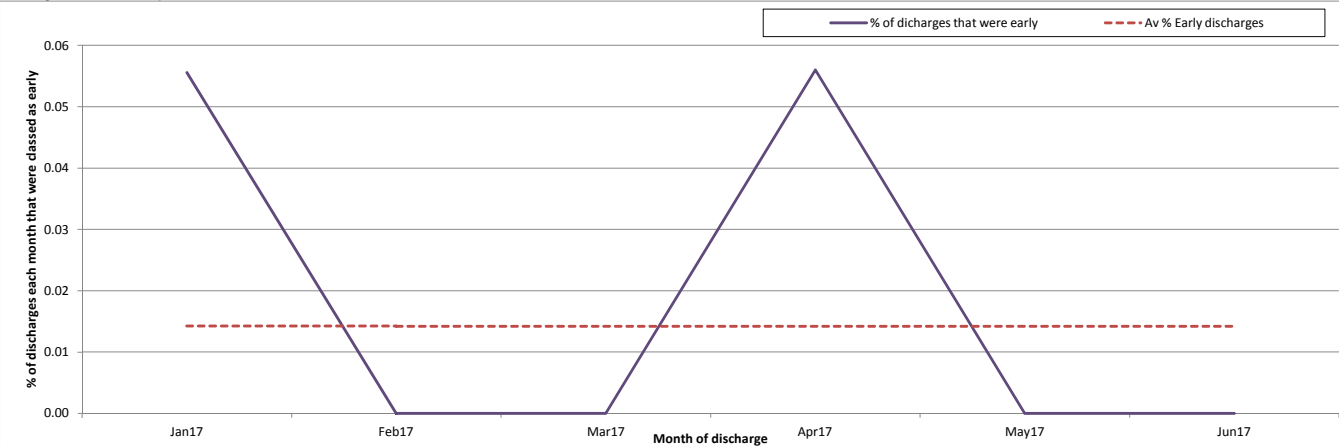
2.3 Night time (NT) discharges, by destination during the last six months (live discharges only)



Month	Number of NT discharges	% of NT discharges	Discharged to:		
			HDU	Ward	Other Area
Jan17	5	3.8%	0	1	0
Feb17	10	2.9%	0	1	0
Mar17	1	0.0%	0	0	0
Apr17	3	15.0%	0	3	0
May17	0	0.0%	0	0	0
Jun17	5	10.3%	1	3	0
Total	24	5.3%	1	8	0

2.4 Early discharges, by destination during the last six months (live discharges only)

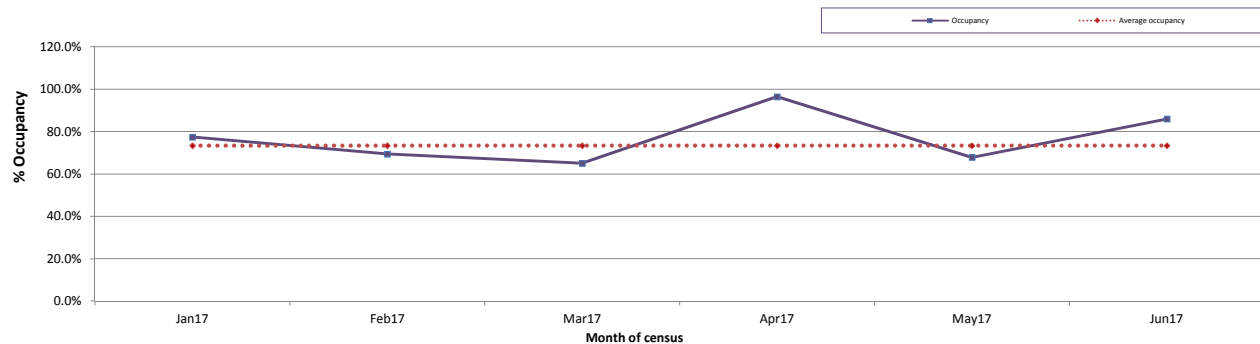
(Quality Indicator 3.2)



Month	Number of early discharges	% of early discharges	Discharged to:			
			ICU	HDU	Ward	Other Area
Jan17	5	5.6%	0	0	2	0
Feb17	0	0.0%	0	0	0	0
Mar17	0	0.0%	0	0	0	0
Apr17	6	5.6%	0	0	1	0
May17	0	0.0%	0	0	0	0
Jun17	0	0.0%	0	0	0	0
Total	11	1.4%	0	0	3	0

Section 3: Treated Patients

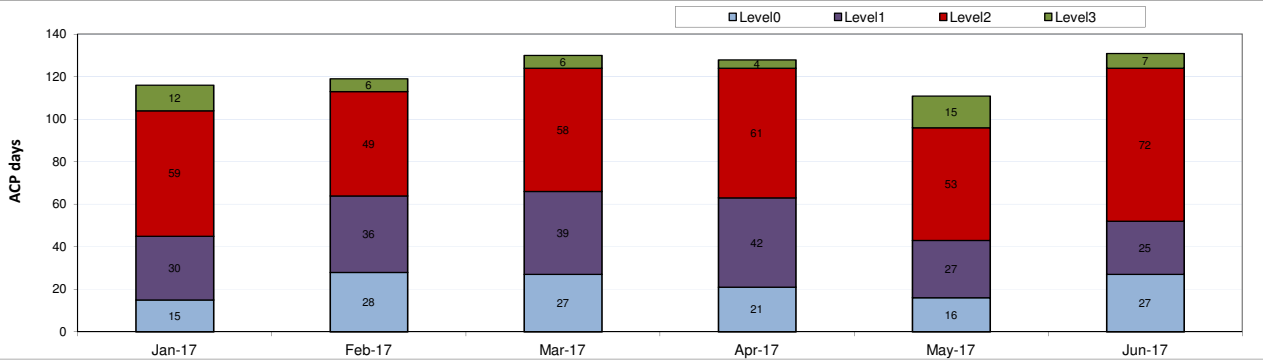
3.1 Occupancy and specific interventions during the last six months



Month	No of treated patients	Occupancy	Vasoactive and/or antiarrhythmic drugs		NIV and/or CPAP		Epidural	
			Patients	%	Patients	%	Patients	%
Jan17	54	77.4%	3	6.8%	1	2.3%	3	6.8%
Feb17	37	69.4%	3	8.1%	2	5.4%	4	10.8%
Mar17	51	65.1%	1	2.4%	3	7.3%	5	12.2%
Apr17	37	96.5%	2	5.4%	2	5.4%	2	5.4%
May17	45	67.9%	3	8.6%	2	5.7%	2	5.7%
Jun17	42	85.9%	5	11.9%	0	0.0%	5	11.9%
Total	266	77.0%	17	7.2%	10	4.2%	21	8.9%

Occupancy for this month is calculated on 3.87096774193548 bed(s).

3.2 Level of care

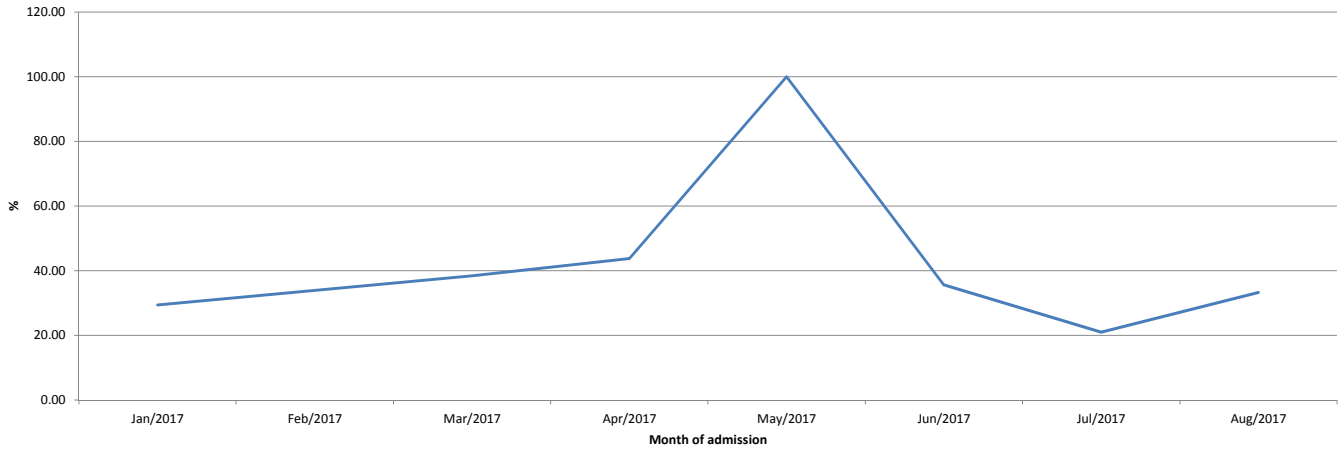


Month	Level 0	Level 1	Level 2	Level 3
Jan17	20	30	59	12
Feb17	28	36	25	6
Mar17	25	45	58	10
Apr17	21	42	61	4
May17	78	27	53	15
Jun17	27	25	72	7
Total	199	205	328	54

Section 4: Healthcare Associated Infection (HAI) Data

4.1.1 % daily infection data completed on Ward Watcher

% daily infection data completed in Hospital Name



4.1.1 Catheter related blood stream infections (CRI-3)

Number of CRI-3	0		
Number of central line days	23		
Infection rate per 1000 central line days	0		
Number of central line days since last infection	2342		

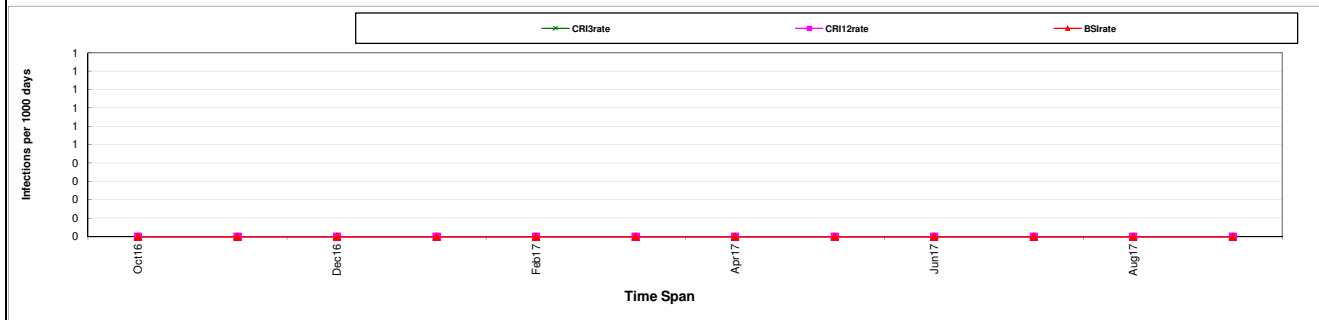
4.1.2 Local and general CVC infections (CRI-1 & CRI-2)

Number of CRI-1	0		
Number of CRI-2	0		
Total number of infections	0		
Number of central line days	23		
Infection rate per 1000 central line days	0		
Number of central line days since last infection	2342		

4.2 Blood stream infections (BSI-A & BSI-B)

Number of BSI-A	0		
Number of BSI-B	0		
Total number of infections	0		
Number of patient days	85		
Infection rate per 1000 patient days	0		
Number of patient days since last infection	9,451		

4.3 Infection Rates: Control-chart



Treated patients

This is the total number of patients treated in this HDU for each of the last six months.

Occupancy

Occupancy is calculated by dividing the total amount of time all beds in this HDU were occupied, by the total number of bed days available. This is displayed as a percentage for each of the last six months.

Specific interventions

This is the number of patients who have had specific interventions recorded at least once during this HDU stay. This is displayed as the number of patients with specific interventions recorded, and as a percentage of total number of patients treated for each of the last six months.

Section 3.2

Levels of care

Levels of care are calculated on a daily basis from the Augmented Care Period (ACP) section of WardWatcher.

Calculating Levels of Care

WardWatcher will score levels of care based on support of five different organ systems: respiratory, cardiovascular, renal, neurological and dermatological. The GI section is not included.

Level 3

- Advanced respiratory support (connected to a ventilator via ETT or tracheostomy) OR
- Two or more organ systems are being supported (except basic respiratory and basic cardiac) OR
- One organ system is being supported and a different system is in chronic failure*

Level 2

- One organ supported

Level 1

- Epidural or/and
- General observations requiring more monitoring than can be provided on a general ward

Level 0

- A patient is assessed as level 0 if not assessed as level 1, 2 or 3 (e.g. no organ support and adequate monitoring could be provided on a general ward)

* Chronic failure is collected from the PMH section of the history page in WardWatcher.